



# Celebrating 19 Years!



**2024-2025 Performing Arts Season**

**Barry J. Houg lum Auditorium**

**27 2nd Street NW, Ulen, MN 56585 • 218-596-8853**

**<https://www.ulenhitterdal.k12.mn.us/top-hat-theatre/>**

Welcome to our exciting 19th season, which includes seasonal favorites along with some new performers for you to enjoy! This season would not be possible without our Friends of the Theatre, business sponsors, and the school district and we thank them for their continued support. We invite you to enjoy this season and all that it has to offer!

All performances begin at 7 p.m. at the Barry J. Hougum Auditorium, 27 2nd Street North, in Ulen.

In the event a performance is cancelled due to inclement weather or other unforeseen circumstances, Top Hat Theatre will make every effort to reschedule the performance. However, we can make no guarantees due to booking schedules of performers. If the weather is questionable, please check Top Hat Theatre's Facebook page, the Ulen-Hitterdal School's Facebook page, or listen to KRJB radio. You can also get updates by subscribing to our newsletter. Go to our website, <https://www.ulenhitterdal.k12.mn.us/top-hat-theatre/>, to sign up.

#### Season Tickets in Person

Season tickets are available at the Ulen-Hitterdal School office, Northwestern Bank in Ulen, and State Bank of Lake Park in Hitterdal. Cost is \$80 for an individual ticket and \$170 for a family (2 adults and 2 students; add \$5 for each additional student).

#### Season Tickets by Mail

Send check to Ulen-Hitterdal School, PO Box 389, Ulen, MN 56585 (see form on pg. 7). You can either pick up opening night, or pay \$3 mailing fee.

#### Single Performance Tickets

(\$20 adult, \$10 student) Tickets are available in the school office, or they may be reserved by calling 218-596-8853 or by email to Carrie Jirava at [tophat@ulenhitterdal.k12.mn.us](mailto:tophat@ulenhitterdal.k12.mn.us), and then picked up at the door the night of the show. Tickets will also be sold at the door unless a performance sells out.



# *Dan Brekke* "A Tribute to the Legends of Country"

**Saturday, October 5, 2024**



The Dan Brekke Band presents "Waylon, Willie, and the Boys," an immersive Outlaw Country Experience! The show dives into the greatest hits of these artists, along with familiar B-sides. Featuring the music of Waylon Jennings, Willie Nelson, and other artists such as Merle Haggard, Roger Miller, Johnny Paycheck, and more, this concert is sure to delight country music fans of all ages! <https://danbrekkemusic.com/>

# *Adessa & the Beat*

**Friday, November 15, 2024**

Adessa and the Beat is a regional Minnesota band with a little something for everyone! Enjoy a tasty mix of country, classic rock, and pop covers of forgotten oldies in addition to Top 10 hits brought to life with powerhouse female vocals and strong group harmony. Adessa & The Beat is sure to get your toes tapping & buckles rubbin' with tunes you're bound to love! <https://www.facebook.com/adessaandthebeat>



# *A Very Diva Christmas*

**Saturday, December 7, 2024**

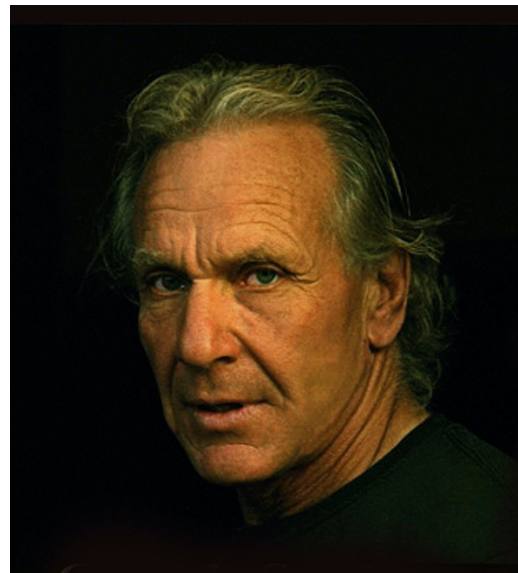
Get ready for a dazzling holiday experience that will make your Christmas season sparkle like never before! The Divas will pay tribute to classic Christmas hits that have warmed hearts for generations, while gliding seamlessly through the decades to the modern pop holiday tunes that define today's festive spirit! Feel the joy and nostalgia as they revisit timeless favorites, witness the evolution of Christmas music, and celebrate the enchanting Divas who've graced us with their iconic renditions of these beloved songs. From soulful ballads of the past to high-energy dance beats of today, "A Very Diva Christmas" promises a night of holiday magic that will have you dancing, singing along, and leaving with hearts full of Christmas cheer! <https://www.facebook.com/divasentertainment321/>



# *Chuck Suchy*

**Saturday, January 25, 2025**

Chuck Suchy is the real thing—one of the foremost musical voices of the American Great Plains. A working farmer, born and raised and at home in the blue hills along the Missouri River south of Mandan, North Dakota, Chuck Suchy has a love for making music that goes back to his childhood. Throughout his youth and young adult life, he found time to perform in the area's halls, clubs, and lounges, singing and playing guitar and accordion. Chuck Suchy has continued to write, sing and record songs evoking and extolling the Great Plains region and lifestyle. His themes have expanded to include songs about human relationships, spirituality, motorcycles, and even sailing. CROSSROADS MAGAZINE has called Chuck "One of the shining lights of the Upper Great Plains." His music and stories speak to everyone -urban and rural- because laughter, love, gain and loss are common to all of us.



# Other Country Ensemble

**Friday, March 21, 2025**

Other Country Ensemble is a Twin Cities-based group that performs original compositions and traditional music from the northern Mediterranean region. OCE will take you on a sonic journey, traveling from Spain (Sephardic Jewish and Flamenco), through France, Italy, Albania, Greece, and landing in Turkey. These veteran musicians perform a wide swath of instruments including oud, bouzouki, bass, alto and concert flute, soprano sax, bass and alto clarinet, flamenco guitar and vocals, doumbek, and frame drums. Their latest disc "Convivencia" relishes the medieval era when Muslims, Jews and Christians co-existed in relative peace - highlighting music as the common thread that brings people together. <https://www.facebook.com/OtherCountryEnsemble>



**Friday, May 2, 2025**

# Six Appeal

Six Appeal is a world class vocal ensemble infused with impeccable comedic timing and the energy and vitality of a rock band. Swearing off instruments, the award-winning vocal band Six Appeal takes you on a journey that spans decades of music, performing classic oldies, current chart toppers, and catchy original tunes - all sung a cappella. Featuring vocal dexterity and adventurous song selection, this remarkably talented sextet of young singers navigates multiple genres of music with a wonderfully eclectic repertoire that is guaranteed to captivate and entertain audiences of all ages. Six Appeal has a passion for spreading their knowledge of a cappella music to every audience, and an essential aspect of their mission is to empower young singers in their educational outreach program. A Six Appeal show will split your sides, feed your musical sweet tooth, and leave you wondering how in the world they pulled it off just with voices. <https://www.sixappealvocalband.com/>



Dear Friends,

Thank you for your continued support of Top Hat Theater! As we welcome our 19th season, jam packed with high quality entertainment for concert goers and educational opportunities for students, we would like to thank each of you for making Top Hat possible. Every person, from our first-time attendee, to our season ticket holders, to our corporate sponsors, is vital to the mission of Top Hat Theater.

Each year, we take special care to plan a season that is both enriching and entertaining. We aim to bring in high quality performers at an affordable price for all. As with everything, the cost of our productions is rising. We continually work to bring in new sponsorships and look for grant opportunities, but sometimes a price increase is unavoidable. For this reason, you will notice a slight increase in our season ticket prices. We appreciate your understanding and look forward to continuing to offer an exceptional season at an incredible value.

Thank you again for your patronage and we sincerely hope you enjoy this 19th season of Top Hat!

The Top Hat Committee

## Become a "Friend of the Theatre"

Would you like to see Top Hat continue to grow and be part of that future? Consider becoming a Friend of the Theater!

Many of our sponsors are businesses, however, we do have quite a few private donors, too! Your donation can be made to honor a loved one, either as a memorial or as an honorarium, or it could simply be a tax-deductible gift.

If there's a particular show you are thrilled about, a single show sponsorship is also a possibility! We have several creative recognition ideas available.

There are many benefits to becoming a "friend," as listed in the chart below. Please feel free to reach out to [tophat@ulenhitterdal.k12.mn.us](mailto:tophat@ulenhitterdal.k12.mn.us) with any questions about membership!

	Soloist	Chorus	Director	Producer	Corporate
Benefits of Membership:	\$25-\$49	\$50-\$99	\$100-\$199	\$200-\$499	\$500 & Over
Tax-Deductible Donation	x	x	x	x	x
Name on Plaque		x	x	x	x
Name in Program			x	x small	x large
Two Single Complimentary Tickets			x	x	x
Two Season Tickets					x



Find us on  
**facebook**

Check out Top Hat Theatre's Facebook page throughout the season for updates, performer photos and weather information.

## Season Tickets Available Through November 15, 2024

### Mail Ticket Order Form

\_\_\_\_\_ individual season @ \$80 each      \$ \_\_\_\_\_

\_\_\_\_\_ family season @ \$170      \$ \_\_\_\_\_

\$3 mailing fee (or pick up at the door)      \$ \_\_\_\_\_

Total Enclosed      \$ \_\_\_\_\_

Name \_\_\_\_\_

Address \_\_\_\_\_

Phone \_\_\_\_\_

Email \_\_\_\_\_

Please make checks payable to  
Ulen-Hitterdal School and mail  
or drop off to

**Ulen-Hitterdal School**  
**Attention: Top Hat Theatre**  
**P.O. Box 389**  
**Ulen, MN 56585**

Thank you for your support!

### Friend of the Theatre

#### 2024-2025 Membership Form

Yes, I/we wish to support the Top Hat Theatre.

Name \_\_\_\_\_ Address \_\_\_\_\_

City \_\_\_\_\_ State \_\_\_\_\_ Zip \_\_\_\_\_

Telephone \_\_\_\_\_ Email \_\_\_\_\_

Please indicate your level of support below. Please check one.

Soloist	Chorus	Director	Producer	Corporate
\$25-\$49	\$50-\$99	\$100-\$199	\$200-\$499	\$500 & Over
<input type="checkbox"/>	<input type="checkbox"/>	<input type="checkbox"/>	<input type="checkbox"/>	<input type="checkbox"/>

How would you like your program listing to read?

\_\_\_\_\_ I/we do not wish to be listed on programs.

**October 5, 2024**

*Dan Brekke "A Tribute to  
the Legends of Country"*

**November 15, 2024**

*Adessa @ the Beat*

**December 7, 2024**

*A Very Diva Christmas*

**January 25, 2025**

*Chuck Suchy*

**March 21, 2025**

*Other Country Ensemble*

**May 2, 2025**

*Six Appeal*



P.O. Box 389  
Ulen, MN 56585