

*Enriching and accelerating learning*



**RICHFIELD**  
PUBLIC SCHOOLS

## **Facilities Fall Planning**

---

**7/28/2020**

*Enriqueciendo y acelerando el aprendizaje*

# Facilities COVID-19 preparations



**RICHFIELD**  
PUBLIC SCHOOLS

- **For students who arrive at the bus stop without a mask, the driver will provide one.**
- **Students will be assigned one student per seat on the bus. We will load from back to front, with an average of 22 students per bus.**
- **When buses arrive at the school**
  - Consider different doors for entry and exit?
  - Students go directly to the classroom
  - 6 foot separation of students coming off the bus and in hallways
  - Consider hand sanitizer/washing upon entry to the building
  - Staff assist with holding the doors to avoid door handle contact?
- **Early arriving walkers – Ensure social distancing**
  - No students congregating outside or in foyers
  - Consider supervision and communication needs
- **Custodians will assist with sanitizing the buses with electrostatic sprayers after each morning drop off**

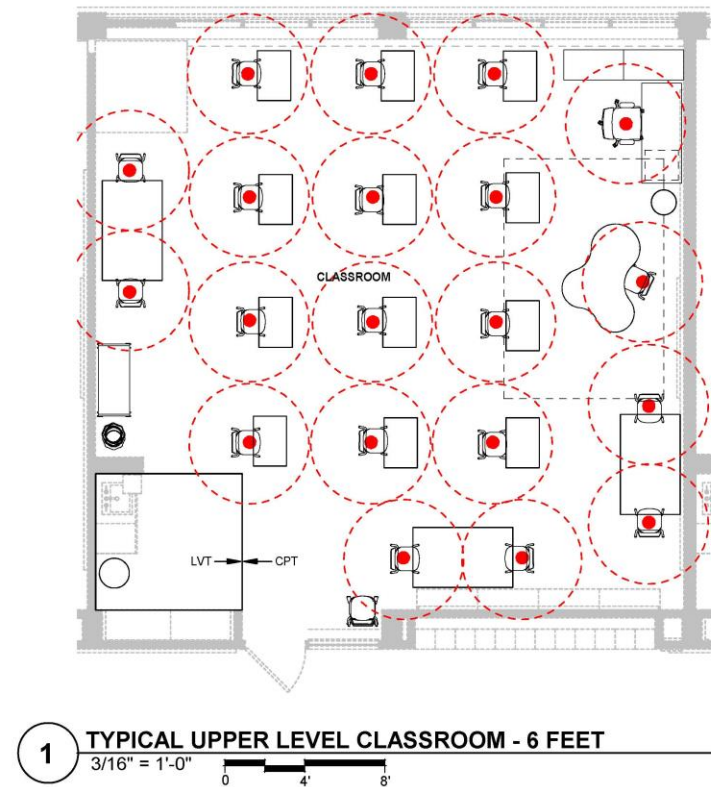
# Classroom seating and distancing



**RICHFIELD**  
PUBLIC SCHOOLS



**Independent School District #280**  
Richfield STEM School - 2019 FFE



7/20/2020 1:12:35 PM  
C:\Users\mrgm\Documents\182288 - Richfield STEM School FFE (Central)\_mrgm\wold\wold.com.rtf  
W:\wv-mrgm\wold.com\37\Paul\182288-STEM\_Richfield STEM School\182288\_Richfield STEM School FFE\02\_ARCH\Rev1\182288 - Richfield STEM School FFE (Central).rtf

COVID Furniture Plan

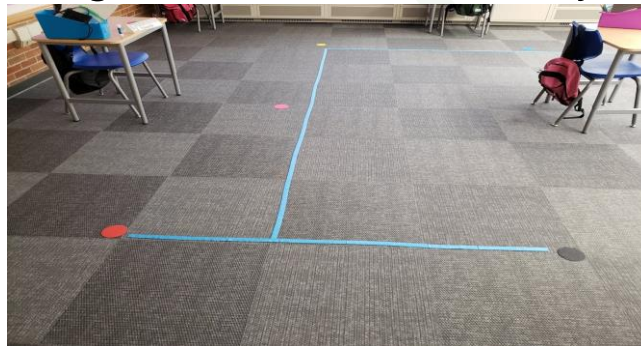
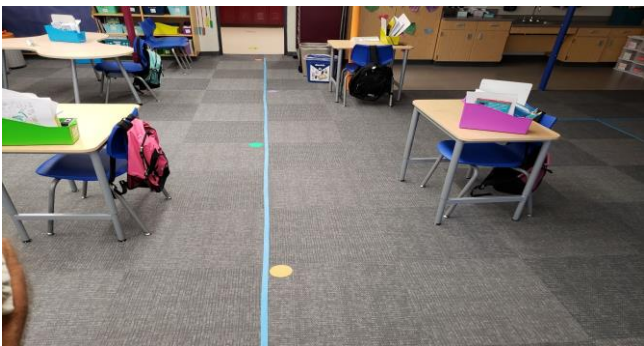
Comm No: 182288

# Floor markings



**RICHFIELD**  
PUBLIC SCHOOLS

- Hallways will be marked one-way directional on each side of the hall with 6 foot distancing stickers
- Classrooms will be marked to divide seating areas following distancing guidelines and furniture placed appropriately
- Guidance
  - Only use district provided floor markings
  - Adhesive tape is not permitted on carpeted surfaces, walls or doors
  - Velcro stripes and dots will be provided for carpeted surfaces
  - Vinyl tape and vinyl social distancing stickers for hard surface floors
  - Building admin and custodian to provide assistance for floor marking
  - Classroom marking design to be consistent by building



# Passing time, recess and playgrounds

---



**RICHFIELD**  
PUBLIC SCHOOLS

- Maintain students in “pods” as much as possible
- Consider fewer hallway transitions
- Students use restrooms as needed with hallway supervision
  - Increase restroom cleaning frequency
- Recess
  - Playground disinfection will be difficult to maintain
  - Encourage social distancing type games on athletic fields

# Lunch

---



**RICHFIELD**  
PUBLIC SCHOOLS

- Students will eat lunch in the classroom
- Large trash, recycle and organics barrels will be placed in the hallways
- Coordinate times between classrooms for dumping food trays
- Teacher and students clean desks after lunch
- Custodians will empty large barrels after the lunch break
- Custodians will return barrels to hallways for end of day departure

# Student departure

---



**RICHFIELD**  
PUBLIC SCHOOLS

- Students to assist with end of day cleaning (see cleaning procedures)
  - Consider cleaning between hours by student/staff (Middle School/High School)
- Students and teacher to use hand sanitizer upon exiting classroom
- Consider how lockers are used
- Maintain 6' social distancing to buses
- Staff to assist holding open doors
- Buses depart from same door as arrival



# Daily cleaning procedures

---



- **Log all cleaning activities on provided log sheet**
- **General Classroom Cleaning (Anytime)**
  - Trigger spray provided per classroom with mild soap and water
  - Teacher to spray each desk and counter
  - Student to wipe down their own desk with provided paper towel
- **High School Procedures?**
  - When moving to different classroom disinfection
  - Students to assist with disinfectant?
- **End of Day Procedures**
  - Teacher and students to clean each desk, chair, counter and high touch areas
  - Where possible place chairs upside down on desks or tables
  - Pick up large items from the floor
  - Empty classroom waste baskets in large waste container in hallway
- **Custodian will disinfect surfaces, vacuum floors and empty hallway receptacles**



# Limit non-essential items in the classroom

---



**RICHFIELD**  
PUBLIC SCHOOLS

- Personal furniture and furnishings
- Personal appliances and lamps
- Scented air fresheners or oils
- Live plants, fish tanks, taxidermy, pets
- Adhesive tape for walls and flooring
- Multiple waste receptacles

- “Masks required” signage at all entries
- Limited visitors in the schools to only those essential
- Plexiglas panels at all customer facing desks
- Encourage/require water bottles (no drinking fountains)
- Classroom furniture needs
  - Limited Plexiglas panels
  - All student facing the same direction when possible
- No shared school supplies
- Identify sick rooms
- Reassign cleaning teams for day cleaning



# Questions?