



Minnesota Educational Facility Management Professionals

The Messenger

JUNE 2016 NEWSLETTER

The “Tool Box” for Educational Facility Management Professionals

MASMS Custodial ~ Grounds ~ Maintenance Days ~ June 2016

**Each year MASMS holds custodial days in three parts of the state.
Here are the dates! This is a great way to thank your
Custodial, Maintenance & Grounds Staff.**

A Day of.... Networking ~ Education ~ Vendor Information ~ Door Prizes ~ Great Food ~ Fun

Just \$25 a person! (Non-MASMS Members \$30) Registration Includes Snacks & Lunch!

June 15 -16, 2016 ~ Metro Chapter Custodial Days being held in Orono Minnesota.

This event is repeated each day, allowing you to send 1/2 your staff each day!

June 21, 2016 ~ Northern/NW Chapter /Custodial Day is being held in Duluth Minnesota.

This event moves every second year from the NW side of the state to the NE side of the state—we are hoping that everyone can attend, however by moving it between these two areas it may allow different members to attend that would not be able.

June 23, 2016 ~ Southern Chapter Custodial Day—Mankato Minnesota

**If you need registration forms, please contact the MASMS office or
go to www.masms.org to download!**

CPS Class Scheduled for August 2016

MASMS has a CPS class scheduled for August 3 & 4, 2016 at the DoubleTree Minneapolis North, Minneapolis MN. The CPS certification is one of the requirements for the MASMS Certification Program. There are 15 openings.

The AFE fee for this training and examination is \$500. MASMS covers the cost of hotel (if you are more than 1.5 hour drive away), breakfast and lunch both days!

Study materials will be sent at least 6 weeks prior to the class. The first day of the class, and the morning of the 2nd day is a review of those materials. The afternoon of the 2nd day is the exam.

This class will be a review of the study materials, and is not meant to be complete instruction. You must spend the necessary time studying the materials prior to the class.

Instructor: Maureen Mullen, MASMS CPS Certified Instructor
(Rockford Public Schools)

Date: August 3rd and 4th, 2016 **Time:** 8:00 AM – 4:00 PM Both Days

Location: DoubleTree Hotel, 2200 Freeway Boulevard, Minneapolis MN

How to register:

Email the MASMS office that you will be applying for this class (ruth@masms.org) and you will be emailed the application. Fill out the application and send it back with the \$500 check (or credit card info) to the MASMS office **before June 20th, 2016**.

The MASMS office will send out your study materials as soon as your application is received and approved! Questions? ~ contact the MASMS office at ruth@masms.org

INSIDE THIS ISSUE:

Custodial Days	1
CPS Class	1
Vendor Corner	2
New Members	2
Motivate!	3
CPS Completed	3
Health & Safety	4
Clean Per Day	5
Memo Board	6



New MASMS Members

Education Members

Randy Schmidt, Proctor Schools

Business Members

Eric Jendro, Widseth, Smith & Nolting

Leonard Peterson, Rebound Sales Group

Bruce Grant, Wausau Paper Company

Andy Beisanc, Wausau Paper Company

Cody Capra, Apex Efficiency Solutions

John Oczak, Kraft Mechanical

Michael Norskog, Herc Rentals

Jessica Hanson, Heartland Glass Company Inc.

Employment Opportunities:

Check it out at www.masms.org

We have new postings weekly.

MASMS State Meeting

was held on May 10th, 2016 in St. Cloud.

Two great speakers, a wonderful lunch and

a tour the St. Cloud Convention Center!

Vendor Corner

*Mike Remington, Inspec
MASMS Vendor Representative*



Be Humble, Be Sincere, and Be Accurate

At our last MASMS Executive Board meeting, Joe Arthurs of Hibbing Schools gave some advice that was so good I thought it was worth remembering and sharing with other MASMS members. He was talking about presenting information to a School Board, but I think it fits many other situations too, including how to interact with customers and employees.

Joe said it was important to "Be humble, be sincere, and be accurate". It is important to be humble, and a lack of sincerity or accuracy can erode trust and integrity. Thanks for the great advice Joe!



MC for the day:
Heather Nosan, MASMS
Vice-President



Dr. Michael Monroe Kiefer
Powermind Training

Peter Shaw, Assistant School District Attorney
Rosemount~Apple Valley~Egan Schools



Recon™ - The Micro-Layer Sports Floor Coating System
Revolutionary Sports Floor Care

One Hour and Four Gallons Away From New Floor Looks and Performance!

Hillyard Hutchinson • 800.423.3550
Hillyard Lino Lakes • 800.950.7660

HILLYARD
Fast In Gown Finishes™

Everyday Strategies Used to Motivate maintenance, custodial and housekeeping professionals. We will have a new idea each month in this newsletter - these ideas are not theory but come from discussions with maintenance, custodial and housekeeping professionals.

Training and Ongoing Development

Training and ongoing development is something that people look for.



Do you have some training going on in you facility or department? Training on new machinery, good cleaning techniques, new products/chemicals, etc. Are you actively training?

train·ing \ 'trā-nīŋ \

a process by which someone is taught the skills that are needed for an art, profession, or job

Garland's Sustainable Vision

Looking for an environmentally responsible roofing solution?

- High-performance building envelope solutions
- ENERGY STAR® qualified restorations and enhancements
- Eco-friendly maintenance and repair solutions
- Integrated rooftop solutions incorporating solar

The Garland Company, Inc.
800-321-9336 • www.garlandco.com
Troy Thompson • 612-991-4851
Brian Thompson • 612-713-0787
Brian Skoda • 612-810-4885

MASMS Members Complete the CPS Certification—Congratulations

The following MASMS Members completed the training and exam for the CPS Certification (this certification is part of the curriculum for the MASMS Certification) on March 16, 2016. Congratulations to each of them on this achievement!

Scott Albright, Winona Schools
Tom Foley, Columbia Hts Schools
Ross Luken, Eden Prairie Schools
Terry Woodworth, Elk River Schools

Brandon Bullock, Eden Prairie Schools
Scott Kaminski, Janesville/Waldorf Schools
Laura Masley, Elk River Schools

Vince Elke, Eden Prairie Schools
Kelly Klein, Warroad Schools
Craig Wokson, Osseo Schools

FOREST TO PLAYGROUND

Nature's Plus

PLAYGROUND SAFETY SURFACING

"Nature's Plus" & "Renewal" are offered by SAFETY FIRST PLAYGROUND SURFACING LLC

Not all wood fiber playground surfaces are the same...

Nature's Plus is the BEST!

- 100% Tamarack. Naturally mold and rot resistant. Tamarack is an outdoor wood.
- 100% live stem wood. No bark, twigs, leaves to cause injury or decomposition.
- Superior performance. The best surface attenuation on the market. Event heights to 12 feet
- ADA and Head Impact Certified Compliant.
- Testimonials and references available upon request

Please call SafetyFirst for more information, a quote or free Safety Surfacing Assessment.

Bob Clarin CPSI - (651) 210-7038
www.safetyfirstplayground.com
bob.clarin@yahoo.com



Health & Safety Section

The MASMS Health & Safety Committee supplies information for this section each month. If you have a specific topic you would like to see covered, just let the MASMS office know

Crumb Rubber in Athletic Fields with Synthetic Turf

Minnesota Department of Health

The Environmental Health Division of the Minnesota Department of Health has recently published a brief information sheet about the use of crumb rubber in athletic fields with synthetic turf. The information sheet is available for download on our Crumb Rubber Athletic Fields website at <http://www.health.state.mn.us/divs/eh/schools/crumbrubber/crumbrubgen.html>.

Crumb rubber is commonly used in synthetic turf playing fields because it is more durable and requires less maintenance than traditional grass fields. Crumb rubber is made by reducing old and unused tires or other rubber into small pellets. Studies have shown that exposure to chemicals in crumb rubber is likely to be small and not harmful to health. However, recent news reports and comments from the public continue to raise questions about exposure to crumb rubber. A study from Connecticut urged caution until additional information is gathered.

The Minnesota Department of Health (MDH) is tracking two important studies on exposure to crumb rubber. MDH will consider their results in any future recommendations regarding the use of crumb rubber in synthetic turf fields.

Toolbox Talks ~ Click here for

Toolbox Talk Topics:

www.masms.org

And then click on Health & Safety
Toolbox Talks on the left!

Controlling Hazards Associated with
Compressed Air Hoses

Pavement Resources

Asphalt & Concrete

13535 Johnson St.
Ham Lake, MN 55304

763-434-2828

www.pavementresources.com



**Serving
Minnesota
Schools**



**Engineering and Consulting
for the Building Envelope**

Roof Spec, Inc.
2400 Prior Avenue N.
St. Paul, MN 55113

Phone: (651) 639-0644

www.roofspec.com

Resources to help determine how much square footage a cleaner can clean per day!

From the MN Department of Health: http://www.buildingwellness.com/assets/documents/Indoor_Environment_Characterization_Of_A_Non_Problem_Building.pdf

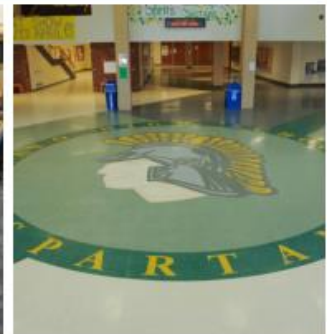
From MASMS (must be logged in): <http://www.masms.org/sites/masms.portal.rschooldtoday.com/files/files/Facility%20Standards%20February%202010.pdf>

"The Minnesota Department of Health has recommended one custodian per 25,000 sq ft in schools. This is an approximate ratio based on information from national organization described in best practices and conference proceedings. The ratio does not factor the types of rooms and floor coverings present. **It should be viewed as the lower end for minimally adequate cleaning. In MDH's school study**, most schools were above this ratio (see Figure 9)."

... and ...

"The APPA has a best practice resource entitled "Custodial Staffing Guidelines for Educational Facilities" (available through www.appa.org). This resource provides guidance for calculating the number of custodians necessary to create a healthful school. A school can be categorized regarding its cleanliness using APPA criteria as described in Figure 10. The APPA recommends schools strive for a Level 2 ("Ordinary Tidiness") maintenance condition **This corresponds to approximately 15,000 sq feet per custodian for a typical school where over 80% of the square footage is classrooms, hallway, cafeteria, gym, and offices.** The exact ratio for a particular school will depend on the size of different areas and the types of flooring. Each school should calculate their own unique needs."

LET US HELP YOU WITH YOUR SUMMER FLOORING PROJECTS



MN STATE CONTRACT FLOORING VENDOR

Carpet
Carpet Tile
Sheet Vinyl
Vinyl Tile
Linoleum
Non-Wax Tile
Furniture Lifting



2909 South Broadway Rochester, MN 55904
P: 888-724-1766 F: 507-288-8877 HillerCarpet.com/commercial

SERVING MINNESOTA SINCE 1947

WHY HILLER COMMERCIAL FLOORS

5 year installation warranty

10 year product
performance guarantee

We travel anywhere in
Minnesota

The MASMS Memo Board

MASMS CALENDAR

June 15 -16, 2016 Metro Chapter Custodial Days—Orono MN
 June 21, 2016 Northern/NW Chapter /Custodial Day—Duluth MN
 June 23, 2016 Southern Chapter Custodial Day—Mankato MN

MARK YOUR CALENDAR 2016 MASMS Conference

Wednesday September 28, 2016 ~ Golf Event
 Thursday September 29, 2016 ~ Conference/Expo
 Friday September 30, 2016 ~ Conference

MASMS EXECUTIVE BOARD

CO-PRESIDENTS

MAUREEN MULLEN, ROCKFORD SCHOOLS
 REED MCFARLANE, LAKE OF THE WOODS SCHOOLS
 VICE PRESIDENT — HEATHER NOSAN,

ROSEMOUNT-APPLE VALLEY-EAGAN

PAST PRESIDENT — KEVIN JOHNSON, RED WING SCHOOLS

SECRETARY—VINCE ELKE, EDEN PRAIRIE SCHOOLS

TREASURER—KEVIN HILDEBRANDT, FARIBAULT SCHOOLS

VENDOR DIRECTOR: MIKE REMINGTON, INSPEC

CHAPTER DIRECTORS:

NORTHERN—JOE ARTHURS, HIBBING SCHOOLS

SOUTHERN—KEVIN JOHNSON, RED WING SCHOOLS

METRO—DON HANSON, SO WASHINGTON CTY SCHOOLS



SINGLE PLY ROOFING



ArchCon represents Carlisle, the top manufacturer of single ply roofing for over 50 years.

Carlisle offers Sure-Seal EPDM, Sure Weld TPO, Sure-Flex PVC and highly puncture resistant Fleeceback membranes. All of Carlisle's membranes come with a full line of labor saving accessories.

Carlisle's products have been installed on a wide variety of buildings including Schools, hospitals and warehouse facilities. With over 19 Billion square feet sold.

EPDM membranes have been the material of choice in the commercial roofing industry for nearly half a century. Carlisle has been the industry standard from the beginning, offering the highest performing energy efficient EPDM membranes on the market. The highly innovative Factory Applied Tape (FAT) gives stronger, more dependable seams. Carlisle's versatility and performance is unmatched throughout the industry.



Hunter Nailbase is a rigid roof insulation composite panel composed of Polyisocyanurate foam core manufactured on-line to fiber reinforced facer on one side and a 7/16" or 5/8" OSB to the other.

The benefits include having a superior combination of insulating properties and a nailable surface. This product will make the building highly energy efficient. Applications are under standing seam metal roofs and heavyweight shingles.

Founder of Inspec Passes

Dwight F. Jennings, founder of Inspec, Inc., passed away on May 17, 2016 at the age of 85. Mr. Jennings began his career at Twin Cities Testing, starting out in the materials testing lab and eventually becoming Chief Engineer during his 17 years there. As Chief Engineer, Dwight shared his knowledge with many young engineers who went on to start their own engineering and testing companies.

Mr. Jennings founded Inspec in 1973 after seeing the need for improved practices for waterproofing building exteriors. Dwight Jennings was a true visionary who built a remarkable legacy and culture in the community of consulting engineers.

Dwight elevated the quality of the Engineering Industry by being fair and ethical, creating trust in all things he did, and living by the motto of "do the right thing". His smiles, compliments, and encouragement will be missed by all who knew him.

MASMS OFFICE

Ruth Kraemer, Executive Administrator ~ Phone: 320-685-4585

Toll Free: 888-429-3884 ~ Fax: 320-685-4592

Email: ruth@masms.org

To unsubscribe from this newsletter, please contact ruth@masms.org