

UNIVERSITY OF WASHINGTON

BAG POLICY

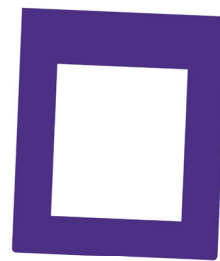
APPROVED BAGS

12" x 16" x 12"
CLEAR PLASTIC
BAG



CLUTCH WITH SHOULDER
OR WRIST STRAP

1-GALLON PLASTIC
FREEZER BAG



*NO LARGER THAN 4.5" x 6.5"

NON-APPROVED BAGS



BACKPACK



CAMERA CASE



MESH BAG



PURSE



SEAT CUSHION
WITH A POCKET



CLEAR
BACKPACK



PATTERN
PLASTIC BAG



LUGGAGE



FANNY PACK



BINOCULAR
CASE



TINTED
PLASTIC BAG



OVERSIZED
TOTE BAG