



Region 4 Boys' 4A Wrestling Tournament

Davis High School
212 South 6th Avenue
Saturday, February 10, 2024

To: Region 4 - 4A Wrestling Boys' Coaches and Athletic Directors

From: Bob Stanley, Host AD/Tournament Manager
Rick Griffith, Computer Operator/Tournament Director

Schools involved: **Big 9** – Moses Lake, Wenatchee, Eastmont, Sunnyside, Davis, Eisenhower, West Valley
MCC – Richland, Pasco, Kamiakin, Hanford, Chiawana

Tournament Schedule:

Saturday, Feb. 11, 2023:

9:00AM	Weigh-ins
10:00AM	Coaches Meeting
10:15AM	Pig Tail (Big 9 #5 vs MCC #4)
11:00AM	Wrestling Starts

Bracket & State Berths

8-man brackets run through Track Wrestling. At the end of the tournament, the top 4 (5th is an alternate) wrestlers from each weight class will earn a place in this year's Mat Classic at the Tacoma Dome.

These wrestlers will also get their picture taken to be featured in this year's State Wrestling Program. Medals will be handed out for the top 4 places.

Awards Ceremony:

Wrestlers will be called up by weight class and place to be given their medals at the conclusion of the tournament. Please make sure your athlete attends the award ceremony. **Wrestlers will be taken immediately from the awards area to the side to have their picture taken for the Mat Classic Program. Please make sure all athletes understand this, so they don't leave the podium without getting their picture taken.**

Allocations from Districts:

8 total: 4.5 from the Big 9, 3.5 from the MCC; 1 alternate per weight class from each League

Alternates

Special Note: Alternates must weigh in to be eligible to compete. Also, Alternates will ONLY be entered into the tournament if a wrestler from their weight class AND their own District/League are injured, sick, or do not make weight. Alternates will be placed in the lowest seeded position for their District and all other wrestlers will be bumped ahead in seeding to fill the spaces for their District.

Seeding:

Seeding will be done based on placement by respective District/League Tournaments.

Weigh-in Procedure:

Photo ID is **REQUIRED**. Weigh-in will take place in the Davis HS Auxiliary Gym. Wrestlers are required to report 15 minutes prior. Each coach is required to bring their WIAA weigh in sheet. **Don't be late to weigh-ins**, officials will lock the doors during weigh-in procedures, no one will be allowed to enter after this point. See attached WIAA Weigh-in procedures.

Mats:

3 mats will be used for the tournament.

Warm-Up (Wrestling room):

There will be a designated warm up area for wrestlers and coaches ONLY to use in warm up activities. All mats will be available for warm up before the tournament begins at 10:00am.

Locker Rooms:

There are locker rooms and showers available for use. Please bring your own towels if you plan on showering.

Team only locations:

The South side of the gymnasium bleachers will be designated for athletes and coaches only. Please no parents, equipment, and supplies out of this area. Only coaches and athletes currently involved in a match or on deck will be allowed on the floor. NO EXCEPTIONS

Hospitality Room:

There will be a hospitality room for **coaches, officials, and tournament workers only**. Please be aware of this and keep your athletes and stat keepers out of this area.

Food:

Concessions will be available.

Games Committee:

The head Tournament official and the Tournament director will develop the committee using Athletic Directors from **neutral** schools.

Admission:

Adult - \$11

Student/Sr. Citizen/Military - \$8

NO CASH SALES AT ENTRY

TICKETS CAN ONLY BE PURCHASED ONLINE AT GOFAN.COM

Pass lists:

Pass lists will be sent out to all schools to include supervisors, administrators, and managers. The deadline for the pass list is Thursday, February 8 by 3PM.

Mat Classic Ticket Pre-Sale:

Pre-sales tickets will be available online; prices are as follows:

All Tournament \$36.50 / \$24.50 (plus fees)

Single Day \$21.50 / \$14.50 (plus fees)

Coaches

Only WIAA approved coaches are permitted to coach during the tournament. The number of coaches allowed at Regionals is based on the WIAA bound for state guidelines, and coaches need to be on the myWIAA Pass Gate List. ***No more than 2 coaches are allowed on the mat during competition.***

Medical:

There will be a certified Athletic Trainer available. However, individual schools will be responsible for providing their own medical kit supplies. Ice will be available. Coaches will clean up blood on wrestlers.

Floor Access:

As a point of emphasis **only 3 people are permitted to be at the corner of the mats (2 coaches & 1 statistician). No one is allowed to line up along the edge of the mat. Coaches need to remain in their designated areas.** Coaches, please talk with your team and let them know they need to remain in the stands. We would also like to ask that you as coaches help monitor this activity throughout the day and remind people to return to the stands.

Ejections:

Ejection for the first instance of flagrant misconduct (Federation Rule). Or ejection for a second instance of unsportsmanlike conduct (Federation Rule) of an "abusive" nature (WIAA Standard). An ejected participant is finished for the tournament and the remainder of the season.

Coaches, please talk to your athletes and fans about their language and "abusive" behavior. This will not be tolerated at any point during the tournament.

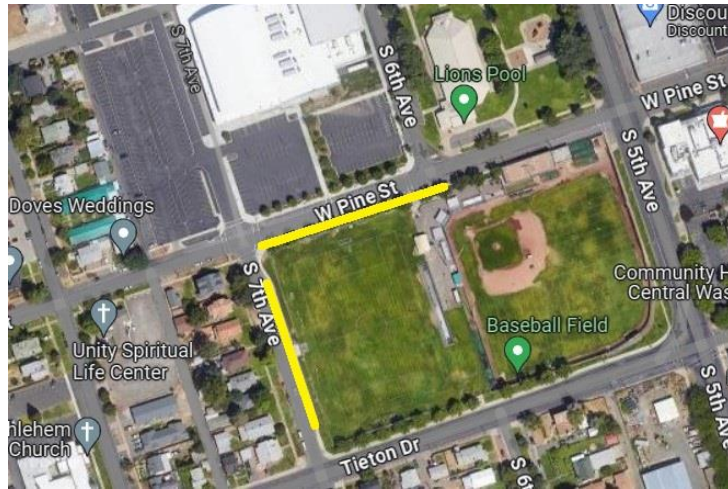
Apparel Sales

Rush Team Apparel, the official & exclusive apparel vendor for the WIAA, will be on site selling regional wrestling apparel & merchandise.

<http://www.rushteamapparel.com/>

Bus Parking:

Busses can unload at site and then park adjacent to soccer field south of campus along 7th Avenue and Pine Street.



Tournament Manager/Host AD:

Bob Stanley, stanley.bob@ysd7.org 509.930.9656

Tournament Computer/Tournament Director:

Rick Griffith, rickg101@gmail.com 424.410.9209

Region 4 Boys' 4A Wrestling Tournament
Davis High School
PASS LIST

SCHOOL _____

Head Coach	Cheer Advisor
1	1
Assistant Coaches	2
1	Cheerleaders
2	1
3	2
4	3
5	4
Managers / Statistics / Video	5
1	6
2	7
3	8
Supervisors	9
1	10
2	
3	

**Email pass list to stanley.bob@ysd7.org by
3 pm, Thursday, February 8**

WIAA REGIONAL TOURNAMENT WEIGH-IN PROCEDURES

The following National Federation Wrestling Rules weigh-in procedures will be used at all WIAA Regional Tournaments.

WEIGH-IN WILL PROGRESS MOST SMOOTHLY IF EACH COACH FAMILIARIZES HIS WRESTLERS WITH THE FOLLOWING PROCEDURES PRIOR TO WEIGH-IN.

- A. All weigh-ins will start 2 hours prior to the start of wrestling each day of the tournaments. All wrestlers are to be present and remain in the designated weigh-in area during the weigh-in period. During the weigh-in process no activities that promote dehydration are permitted. Wrestlers will be weighed in by weight class.
- B. **The wrestler must present the Photo Id to gain access to the weigh-in area. Only PHOTO ID SUCH AS AN ASB CARD OR DRIVER'S LICENSE OR ONLINE OFFICIAL SCHOOL ID are acceptable NO ID ON PHONES.** In the event the wrestler fails to bring acceptable photo ID then the wrestler and coach must report to the Head Announcers Table to vouch for the wrestler's identity. Wrestler(s) without Photo Id, will be grouped to weigh in after those who have proper ID.

WRESTLERS WILL NOT BE ABLE TO BRING GYM BAGS OR BACKPACKS INTO THE WEIGH-IN AREA. Athletes are asked to arrive in sweat tops and bottoms.
- C. The wrestler must be prepared to clear the hair/nails/skin checks before the weigh-in begins. This process should begin approximately 30 minutes prior to the start of weigh-ins.
- D. Wrestlers treated by a Physician prior to the tournament, must bring the NFHS Infectious Skin Form, signed by the physician, to weigh-ins. The tournament Physician/trainer/Official will have final determination on the participation of all wrestlers concerning health and safety issues.
- E. After clearing the hair/nails/skin checks, wrestlers will be admitted to the weigh-in area and wait for the beginning of weigh-ins. There are to be **NO** attempts at dehydration while in the weigh-in area.
- F. The wrestler must present his/her **and photo ID** to the weigh-in official. If the wrestler makes weight then the official will write the weight on the weigh in sheet. **Only wrestlers whose passes hair check, nail check, skin check, and weigh in by the weigh-in official become tournament participant. Wrestler who do not pass the nail, hair, skin will be noted as deficient, must correct deficient item(s), then must be cleared at the head table 60 before matches start.**
- G. A wrestler shall weigh-in for only one weight class during the weigh-in period. If only one scale is available, a wrestler may step on and off that scale TWO times to allow for mechanical inconsistencies in the scales. If the wrestler fails to make weight on the first scale, the wrestler shall immediately step on each of the available scales ONE time in an attempt to make weight.
- H. The weigh-ins are closed by the tournament manager immediately following the completion of the last wrestler in that weight class.

ALTERNATE REGISTRATION AND WEIGH-IN PROCEDURES

- A. Every effort will be made to notify coaches in the event their alternate(s) seems likely to become a contestant. However, it is always best to check personally with coaches from within your league.
- B. Alternates may weigh-in at the discretion of their coach. (Follow the procedure listed above.)