

Annual Report on Curriculum, Instruction and Student Achievement

WABASHA-KELLOGG
PUBLIC SCHOOL
DISTRICT #811



What is the Curriculum Advisory Committee?

The Curriculum Advisory Committee is a group of community people who meet periodically to advise the district about matters relating to curriculum. It offers guidance and direction regarding curriculum improvement plans. Membership on the Curriculum Advisory Committee is on a volunteer basis. Advertising for new members is done in this report. Members representing the school board are selected at their annual reorganization meeting.

2012-2013 Members

Jon Stern	Karen Taylor	Rita Rabehl
Roland Kallstrom	Sandy Wolfe	Rob Stewart
LaLena Blaschko	Beth Hajek	Neil Hedquist
Sharon Roemer	Holly Diepenbrock	

The 2013-2014 meeting dates are September 16, 2013, November 11, 2013, and January 20, 2014. The meetings begin at 4:30 p.m. in the high school IMC.

How to join the Curriculum Advisory Committee?

Our school district strives to keep communication lines open to and from our community. If any resident is interested in serving on the Curriculum Advisory Committee, please contact Ann Meyer, Principal's Secretary at 651-565-3559, extension 251.

CURRICULUM IMPROVEMENT

We established the following District Curriculum Improvement Goals for 2013-2014:

1. Continue with the maintenance of standards based education as mandated by federal and state law.
2. Explore alternative ways to offer programs that will provide options for students.
 - CIS Course Offerings
 - Anatomy and Physiology
 - Math Modeling
 - Physics
 - Spanish
 - Examine adding Psychology and Writing Studio
3. Interactive Television Courses explored;
4. Seek to develop avenues to increase math proficiency leading to acquisition of developmental milestones.
5. Develop methods to facilitate the declination of the effects of summer regression in reading and math for elementary students.

6. Utilize existing data to determine departmental coursework selection by students.
 - New scheduling system implemented Fall of 2011.
7. Seek to improve passing percentages on the Math MCA-II/GRAD test.
8. Given MCA testing for reading in grades 3-8 and 10 and math grades 3-8 and 11, the number of students meeting or exceeding grade level standards will increase.
9. Given MCA testing for science in grades 5, the number of students meeting or exceeding grade level standards will be maintained while the number of students testing in science in grades 8 and 10 that meet or exceed grade level standards will be increased.
10. Analyze data from the MCAs to determine need for improvement.
11. A survey will be developed to gain information concerning graduates of Wabasha-Kellogg.
 - E-mail addresses collected from Class of 2012 and 2013 Only 10 of class of 2012 responded.
 - Survey being developed utilizing Survey Monkey
12. Staff development will examine ways to increase awareness of and proficiency of use of available data collected.
 - Development of local PLCs in 2011-12
 - Formative and Summative Assessment
 - Standards Insight Tool
13. Continue to improve all areas of curriculum in order to provide for a well balanced education for students in all grades.

District Testing Program 2013-2014

TEST	DATE & PLACE ADMINISTERED	GRADE LEVEL	TYPE OF TEST
Northwest Evaluation Association (NWEA)	August-September 2013 Spring, 2014 In-School	2 – 10 Reading, Math (LA optional) 11-Math	Achievement
AIMSWEB	Fall, Winter, and Spring for all K-10 In-School	K-10	Achievement
Preliminary Scholastic Aptitude Test (PSAT) \$14.00	October 16, 2013 In-School 8:15 AM	11	College Entrance
American College Test (ACT) \$36.50 \$52.50 Writing	October 26, 2013 December 14, 2013 February 08, 2014 April 12, 2014 June 14, 2014	11 12	College Entrance
Scholastic Aptitude Test (SAT) Variable Costs	October 5, 2013 November 2, 2013 December 7, 2013 January 25, 2014 March 08, 2014 May 3, 2014 June 7, 2014	11 12	College Entrance

PSAT

(Preliminary Scholastic Aptitude Test)

Six juniors (class of 2014) took the PSAT in October of 2012, representing 9% of the class. The PSAT is designed to measure a student's aptitude for higher level learning and is also the qualifying test for the National Merit Scholarship. The scores are based on 20-80 scale (80 being perfect).

		<u>Critical Reasoning</u>	<u>Math</u>	<u>Writing</u>
W-K avg.	2009	49.1	49.5	46
W-K avg.	2010	50.75	56.56	48.75
W-K avg.	2011	48.67	52.50	46.17
W-K avg.	2012	32.17	40.67	37.17

ACT

(American College Testing)

Thirty-five students took this assessment during the 2012-2013 school year. The ACT is a college entrance exam used by the majority of Midwestern colleges. The primary use of the ACT by colleges is to assess the ability a student has for higher learning in four key academic areas. Scores are based on a 1-36 scale (36 being perfect).

	<u>English</u>	<u>Math</u>	<u>Reading</u>	<u>Science</u>	<u>Composite</u>
W-K	21.0	21.9	22.2	23.1	22.3
MN	22.2	23.1	23.1	22.9	23.0
Nat'l	20.2	20.9	21.1	20.7	20.9

Averages over the past 5 years:

	<u>English</u>	<u>Math</u>	<u>Reading</u>	<u>Science</u>	<u>Composite</u>
W-K	20.88	21.8	21.62	22.82	21.96
MN	22.1	22.86	23.06	22.7	22.8
Nat'l	20.48	21.0	21.3	20.84	21.04

ACT prep class will be offered in Lake City in March and Plainview in January.



2013-2014 Grad Test

The graduation assessments for reading and math have changed. More options now exist to meet the requirement of passing these graduation assessments. The options are explained as follows.

- Achieving Proficiency on written composition (9th grade), reading (10th grade), and mathematics (11th grade) during the initial assessments
- Passing GRAD retests in written composition, reading, and/or mathematics
- Meeting GRAD alternate route in mathematics by completing the GRAD retest at least twice

New approved Methods

- Take or have taken ACT/ WorkKeys/Compass/or Armed Services test
- Have or receive score on district determined equivalent assessments

W-K MCA Grad Results 10th-12th grade

Graduation Year 2013:

Reading Pass	Math Pass	Writ. Comp Pass
100%	100%	100%

Graduated via alternative assessment pathway:3

Graduation Year 2014: 66 Assessed in Math

Reading Pass	Math Pass	Writ. Comp Pass
98.5%	81.8%	100%

State Math Percent Passing...66.4%

Graduation Year 2015: 42 Assessed in Reading

Reading Pass	Math Pass	Writ. Comp Pass
64.3%	N/A	100%

State Reading Percent Passing...62.3%

Graduation Year 2016: 52 Assessed in Writing

Reading Pass	Math Pass	Writ. Comp Pass
N/A	N/A	88.5%

State Writing Percent Passing...87.8%

2013 Written Composition Results

All the 10th graders across the state were given the Basic Standards test of written composition. Starting in 2006-07, this test became a ninth grade examination. This means that both ninth and tenth graders took this test in 2007. Students must pass this test in order to be eligible to graduate from a Minnesota public high school.

Students had to write a clear message in English for an adult reader. There are several parts that each composition must have: a clearly stated message; supporting ideas related to the message; a clear connection among ideas; a logical beginning, middle and end; and correct use of grammar, spelling, and punctuation.

Written Composition

2002 Wabasha-Kellogg	93%
2003 Wabasha-Kellogg	86%
2004 Wabasha-Kellogg	91%
2005 Wabasha-Kellogg	97%
2006 Wabasha-Kellogg	95%
2007 Wabasha-Kellogg	95% Tenth Grade
2007 Wabasha-Kellogg	94% Ninth Grade
2008 Wabasha-Kellogg	91% Ninth Grade
2009 Wabasha-Kellogg	93% Ninth Grade
2010 Wabasha-Kellogg	91% Ninth Grade
2011 Wabasha-Kellogg	89% Ninth Grade
2012 Wabasha-Kellogg	100% Ninth Grade
2013 Wabasha-Kellogg	89% Ninth Grade

Routes to Meeting State Graduation Assessment Requirements

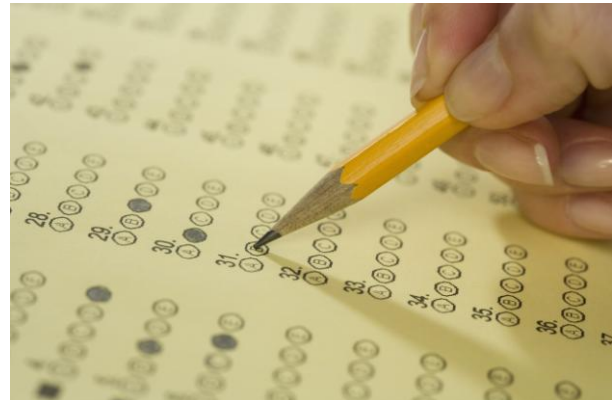
This table outlines the different routes for meeting graduation assessment requirements that are dependent on when students first enrolled in grade 8. Districts will determine what routes will be offered and used to meet requirements.

Student first enrolled in grade 8 through 2009–10 (Class of 2014)	Student first enrolled in grade 8 in 2010–11 or 2011–12 (Class of 2015)	Student first enrolled in grade 8 in 2012–13 and later (Class of 2016+)
Meet or have met Graduation-Required Assessments for Diploma (GRAD) requirements in written composition, reading, and mathematics by: achieving proficiency on high school Title I assessments; passing GRAD retests ⁶ ; and/or meeting GRAD alternate routes ⁷ OR Take or have taken ACT / WorkKeys / Compass / Armed Services test OR Have or receive score on equivalent assessment (district determined)	Meet or have met Graduation-Required Assessments for Diploma (GRAD) requirements in written composition, reading, and mathematics by: achieving proficiency on high school Title I assessments; passing GRAD retests ⁶ ; and/or meeting GRAD alternate routes (except math alternate pathway) OR Take or have taken ACT / WorkKeys / Compass / Armed Services test OR Have or receive score on equivalent assessment (district determined)	Take Grade 8 Career and College Assessment (when available) AND Take Grade 10 Career and College Assessment POSSIBLY Take College Placement Diagnostic Assessments ⁸ AND Take Grade 11 College Entrance Assessment OR MTAS (for grades above)

MINNESOTA COMPREHENSIVE ASSESSMENTS Third-Eighth, Tenth and Eleventh Grades

In April 2013, all public school students in grades three through eight took math and reading tests. Fifth, eighth, and tenth grade students also took the Science MCA test. These tests measure student performance against Minnesota's High Standards for the primary and intermediate level.

Student performance on the test is broken down into four achievement levels. If the two last whole number digits in the score are 50 or above it is considered to be at or above grade level.



Third Grade Results:

Reading Mean Score	Math Mean Score
357.40	363.75

Fourth Grade Results:

Reading Mean Score	Math Mean Score
451.35	454.26

Fifth Grade Results:

Reading Mean Score	Math Mean Score
554.13	547.11

Sixth Grade Results:

Reading Mean Score	Math Mean Score
662.12	659.58

Seventh Grade Results:

Reading Mean Score	Math Mean Score
754.79	755.83

Eighth Grade Results:

Reading Mean Score	Math Mean Score
848.02	855.06

Tenth Grade Results:

Reading Mean Score
1052.86

Eleventh Grade Results:

Math Mean Score
1148.30

Science MCA (Percent Proficient)

2008-2009

	Fifth	Eighth	High School
W-K	76.3%	37.5%	47.1%
MN	45.0%	42.6%	49.5%

2009-2010

	Fifth	Eighth	High School
W-K	81%	36%	60%
MN	46%	48%	51%

2010-2011

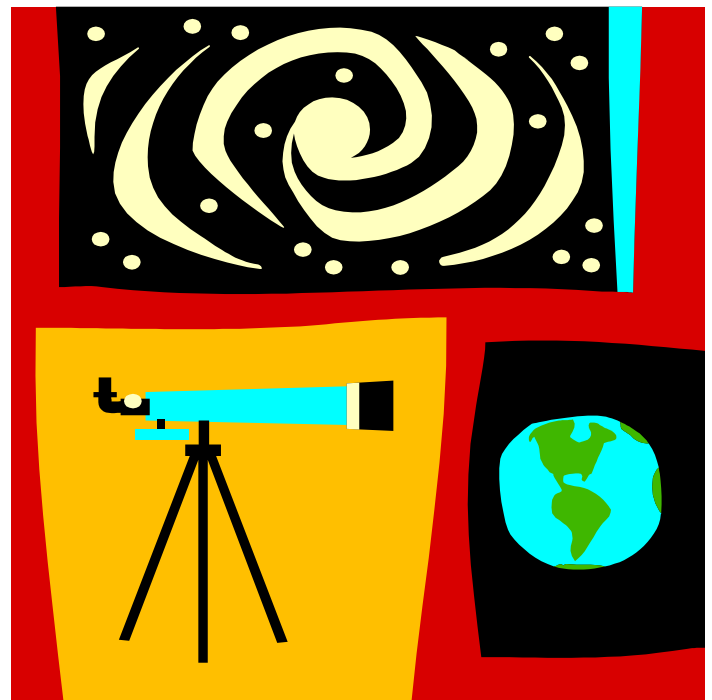
	Fifth	Eighth	High School
W-K	73%	52%	70%
MN	46%	44%	54%

2011-12

	Fifth	Eighth	High School
W-K	94%	44%	53%
MN	57.7%	41.9%	51.7%

2012-2013

W-K	68.2%	55.1%	42.9%
MN	59.7%	43.8%	53.0%



2013-2014 STATEWIDE TEST SCHEDULE 3RD - 11TH GRADE

GRADE	TEST	SUBJECT AREA	DATES
3 rd - 8 th	Statewide Assessments	Reading (paper) Mathematics (on-lin)	April 14 – April May 2, 2014 March 10—May 9, 2014
5 th 8 th High School	Statewide Assessments Science MCA-II	Science	March 17, 2014 through May 16, 2014