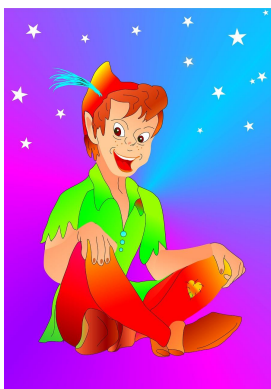


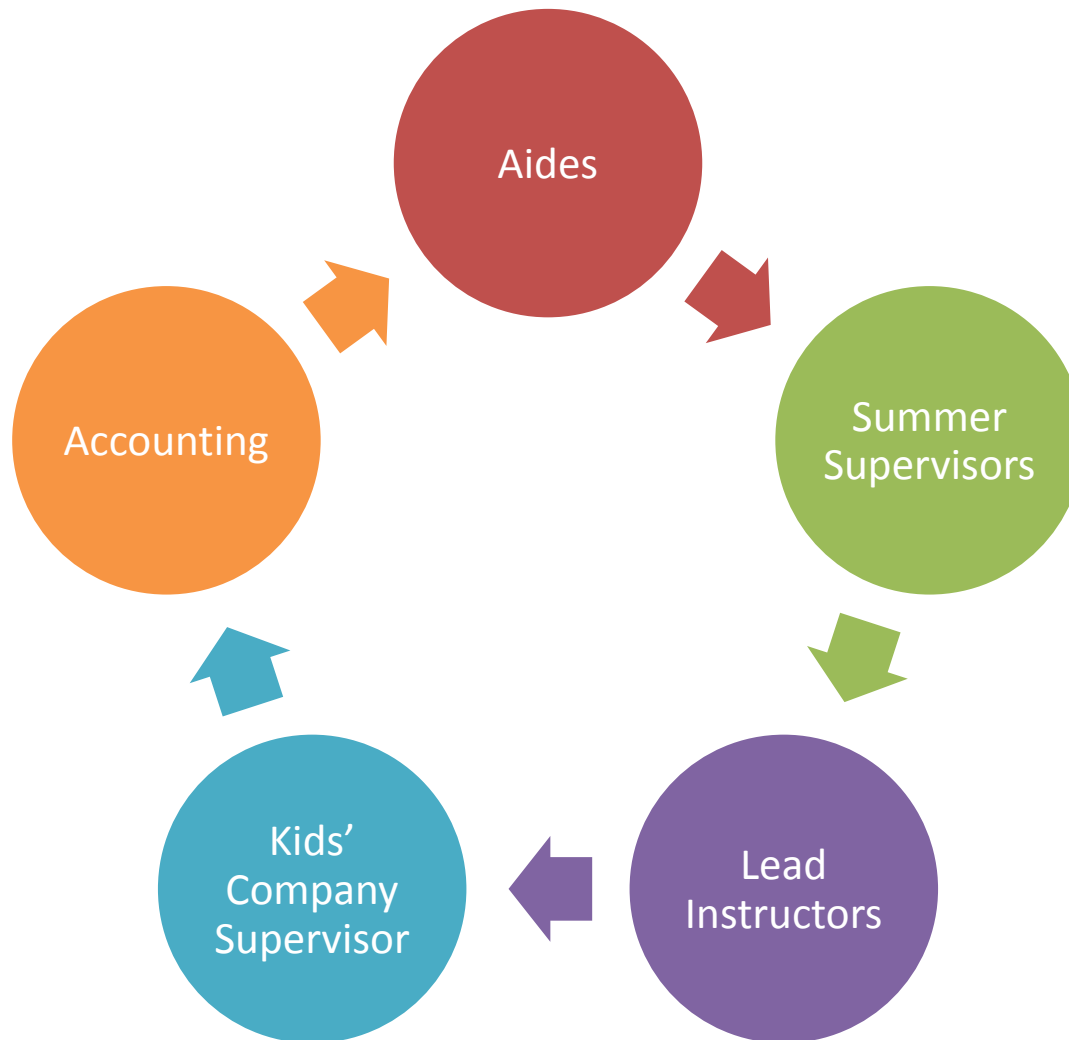


Welcome

Summer Kids' Company 2023



Kids' Company Staff



Summer Supervisor

Ashley Karels

Akarels@isd110.org

Sommer Poehler

spoehler@isd110.org



Important Dates

June 12th First Day

June 19th KC Closed

July 4th KC Closed

August 16th last day

Drop Off and Pick up

Drop off and pick up will happen on the north side of the building by the playground

Express check in will be from 7:00 - 8:15

Kids' Company is open from 6:00am - 6:15pm

Late pick up policy-\$1 per minute per child

Typical Schedule

6:00-9:00 drop off and table games/ gym and playground

9:00-9:30 Groups gather for attendance

9:30-9:45 Snack and enrichment activity

9:45-12:00 Station rotation

12:00-1:00 Lunch

1:00-1:30 break

1:30-4:00 Station rotation/local field trip

4:00-6:15 Group spaces activity

Two days a week groups will have reading and math in their schedule

Food Options

- ❑ At registration you had the option to sign up with lunch and snack or without.
- ❑ Cafe #110 will be offering morning and afternoon snack along with lunch.
- ❑ If your child does not have the lunch option and forgets a lunch or snack we will provide it and bill your student \$5.00.
- ❑ If you bring your lunch from home you will also need to bring your snack
- ❑ A lunch menu was sent out via email this morning
- ❑ Lunch will be eaten in the lunchroom

CAN I SIGN MY CHILD UP FOR EXTRA CLASSES

We can get students to CE camp and summer school as long as it is in walking distance.

Field trip camp notification must happen two weeks prior to activity for us to be able to get child to and from camp.

If your child's group has a field trip on a camp day we will not be able to get your child to and from camp as their staff will be off site.

Field Trips

- ❑ A schedule of field trips were shared with families
- ❑ Families had the option of choosing prepaid or paying two weeks prior to trip
- ❑ If you have prepaid and need to cancel. Your account will be credited as long as a two week notice was given.
- ❑ Do to limited staff we are unable to provide alternative care for students not attending their field trip. You will not have to take a comp day if not attending the field trip
- ❑ Some field trips may conflict with summer school

Keep in Mind

Please
Read the
Parent
Handbook

Medical Conditions

Talk with
your Lead
Instructor
at open
house

On-line billing

Check
each
month

Contact number

Main line
442-0614

Main e-mail
bvkidsco@isd110.org



Preschoolers

Social and emotional approach

Lunch time is at 12-12:30

Nap time is optional from 12:30-1:15

Peterpan and Tinkerbell



Aide Ashlie, Lead Lorraine

Jake and the Neverland Pirates



Lead Rhonda, Aide Peyton

Preschool Staff

Kindergarten Staff

Mermaid Lagoon



Lead Nora, Aide Wiston

Pirates Cove



Leads Chandra, Grace J
Aides Zach, Brooklyn

Ice Realm



Lead Isabelle
Not pictured is aide KK

1st Grade Staff

Tiki Forest



Lead Stephanie
Aides Emma T, Kendall

Pixie Hollow



Leads Jordyn, Jasmine
Aides Elias, Anna B

Bird Island



Lead Alexa
Aides Hayden, Emyle

2nd Grade Staff

Lost Boys



Leads Doug, Denise
Aide Riley

Neverpeak Mountain(½)



Lead Alexis Aide Jada

Peters Hide out



Lead Yanet
Aides Isabelle J, Avery,
Teegan

Neverwoods



Leads Scottie, Sierrah
Aide Courtney

3rd Grade Staff

Neverseas



Lead Anna J
Aides Kyler, Mary

4th grade and the Verge

- The 4th grade group is still under the Kids' Company contract option
- 5th and up do not hold a contract
 - Verge children are able to sign themselves in and out of the program. If you are not comfortable with that please let the lead know.
- Due to registrations these groups will combine
- The first week the staff will talk with the group about things they would like to do this summer
- If these ideas become activities the Leads will share the information with families.



Aide Grace, Lead Aiden



Lead Simone, Aide Nick

Things the Staff should know

- ❖ Allergies
 - Make sure we have any medical plans in writing
- ❖ Behavior programs
 - If you are working on any behavior plans please let the staff know
- ❖ Significant life changes for the child

What to bring and what not to bring to Kids' Company

Bring

- Tennis Shoes
- Dress appropriate for the weather
- Sun block not spray
- Bug spray
- Water bottle
- Blanket and pillow for pre-k
- Draw string backpack

Don't Bring

- Toys
- Game Cards
- Electronics
- Money
- Smart Watch

Frequently Asked Questions

- ❖ Who do I contact to change my contract
- ❖ How is sunblock applied
 - First application should be at home
- ❖ Parent handbook
 - behavior policy
 - Potty policy
- ❖ Staff to student ratio
 - between 1 to 10 or 1 to 15 depending on age and dynamics of group and activity
- ❖ Swimming days
 - How is it supervise
 - wristbands
 - staff rotation
- ❖ If your student is going to be gone
 - You can email or call and leave a message
- ❖ Open house tomorrow from 5:00-7:00