

How to set up your iPad

1. This is the first screen you should see when you turn your iPad on.



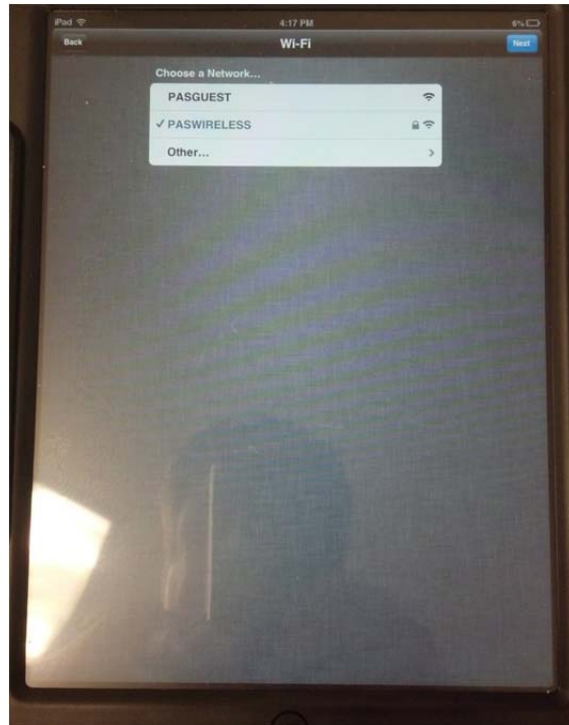
2. Select your language on this screen and click the blue "next" button.



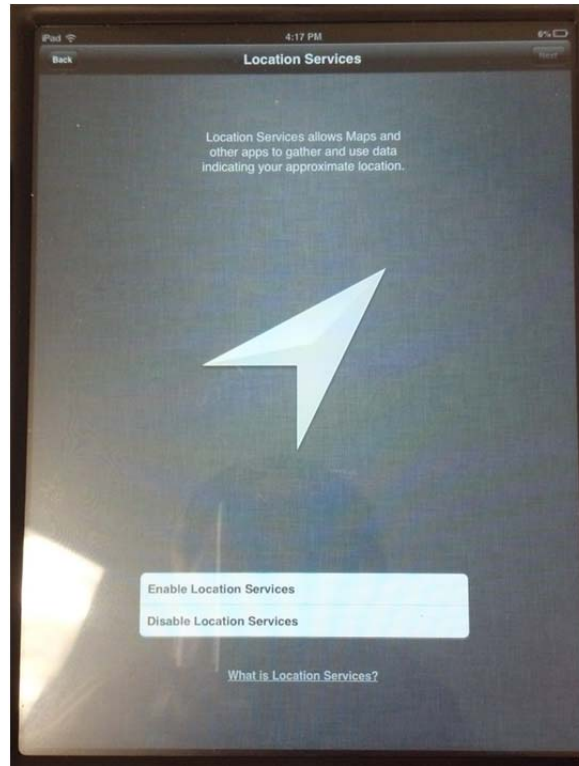
3. Select your country and click the blue “next” button.



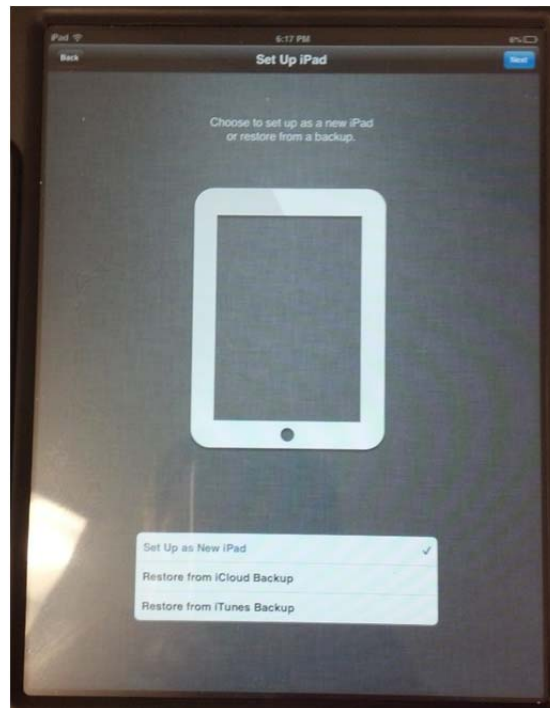
4. When you get to this Wi-Fi screen, PASWIRELESS should already be selected and connected. All you have to do here is click the blue “next” button.



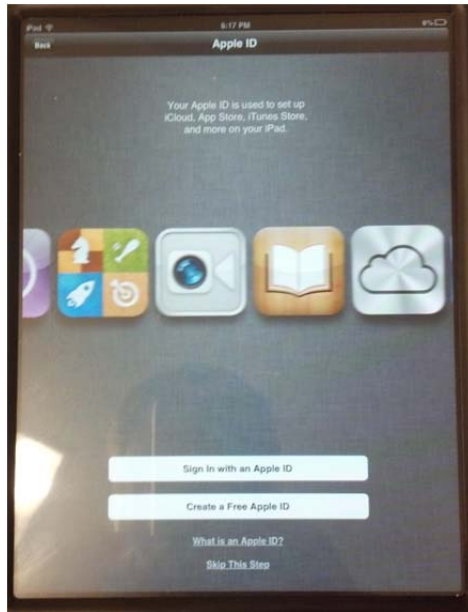
5. Click on "Enable Location Services" on the location services screen and click the blue "next" button.



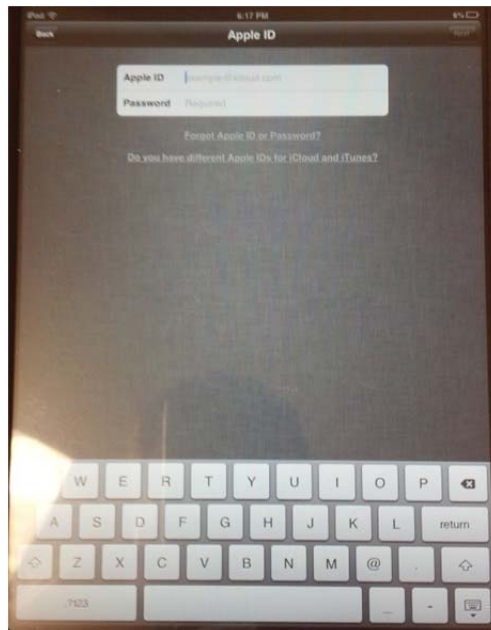
6. On this screen make sure "Set up as New iPad" is checked and click the blue "next" button.



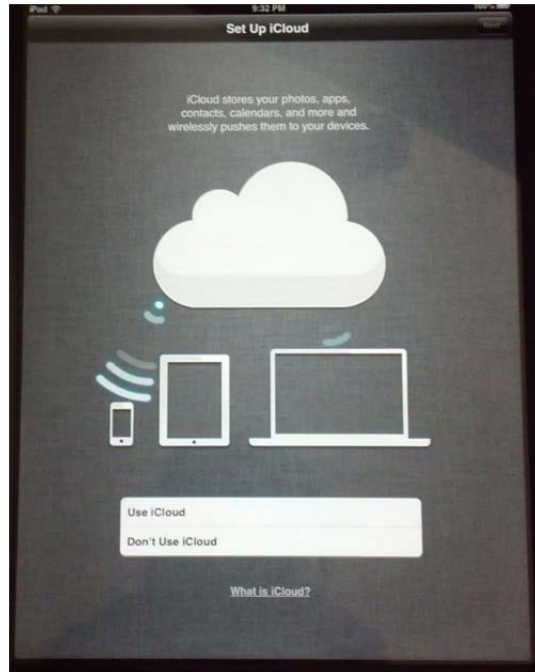
7. This screen is very important. On here you will chose to create your own Apple ID or use the school's and download apps that we already own.
 - a. Create a Free Apple ID. If you chose to do this, just follow the steps to create your own Apple ID. If you do this you will either have to purchase the apps yourself or requisition for an Apple gift card to purchase apps. If you purchase them yourself you will always own the apps and you can put them other devices that you may personally own.
 - b. Sign in with and Apple ID. If you chose to do this, I will email you the password to access the purchased apps and you can download them yourself.



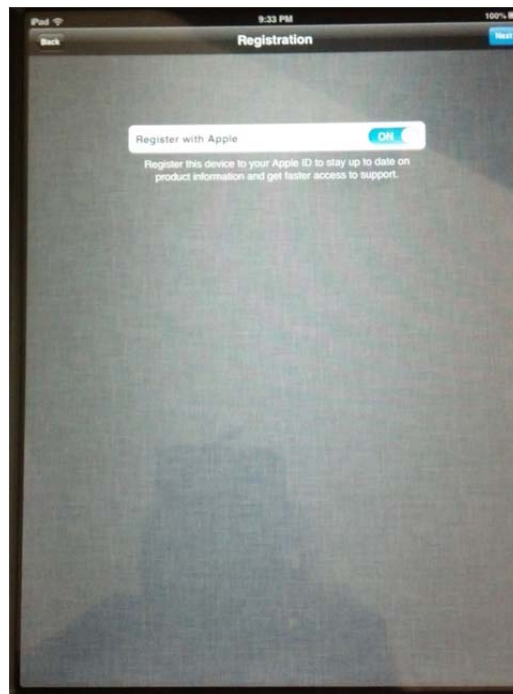
8. Once you have decided to either create your own Apple ID or use the school's, you must sign in on this screen.



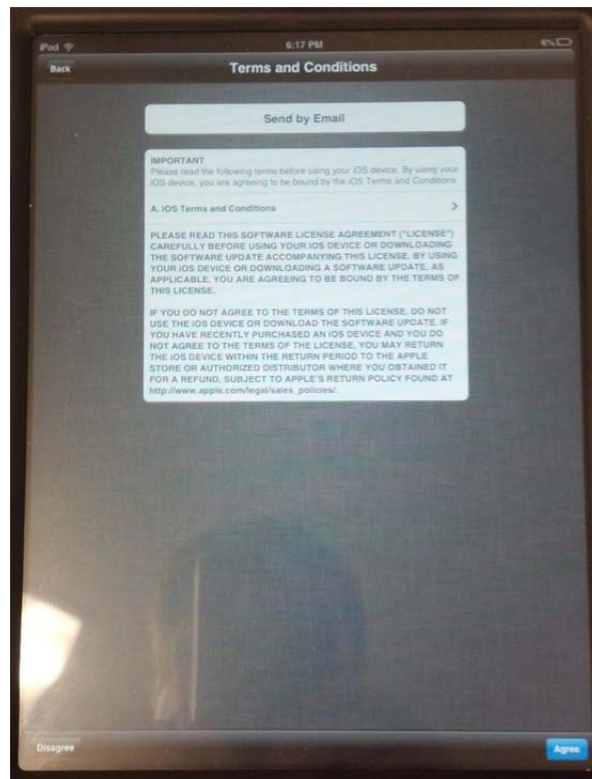
9. Once you login, you will see this screen. DO NOT USE iCloud IF YOU USED THE SCHOOL'S APPLE ID!!!! PLEASE SELECT "DON'T USE iCloud"!!! If you created your own Apple ID, you can use iCloud if you like. (This option can always be turned on or off later if you change your mind) Click the blue "next" button.



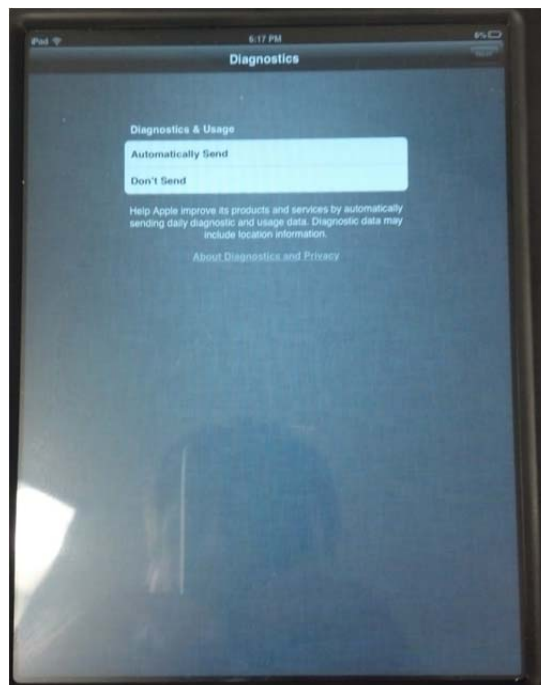
10. At the Registration screen, turn the registration "off" and click the blue "next" button.



11. At the Terms and Conditions page, agree to the terms and conditions and click the blue “next” button.



12. On the Diagnostics screen, select “Automatically Send” and click the blue “next” button.



13. You may now begin using your iPad. Refer to the "Installing Apps" document to start begin downloading apps.

